



Ashtons

The Micklegate, Cocoa Gardens, Wigginton Road, York,

YO21 2AG

The Micklegate, Cocoa Gardens Wigginton Road, York YO31 8AS

£550,000



The Micklegate – Four Bedroom Semi-Detached – Freehold – Over 1400 Sqft

Cocoa Gardens is a sought-after development of eco-friendly new homes, perfectly placed with direct access onto the cycle path that loops around York and within walking distance of the city centre. Offering green open spaces and countryside walks alongside excellent access to the train station, District Hospital and local schools, it delivers the best of both city and outdoor living.

Built by Latimer, part of Clarion Housing Group, the homes are designed with quality and efficiency in mind, featuring contemporary finishes and sustainable air source heat pumps.

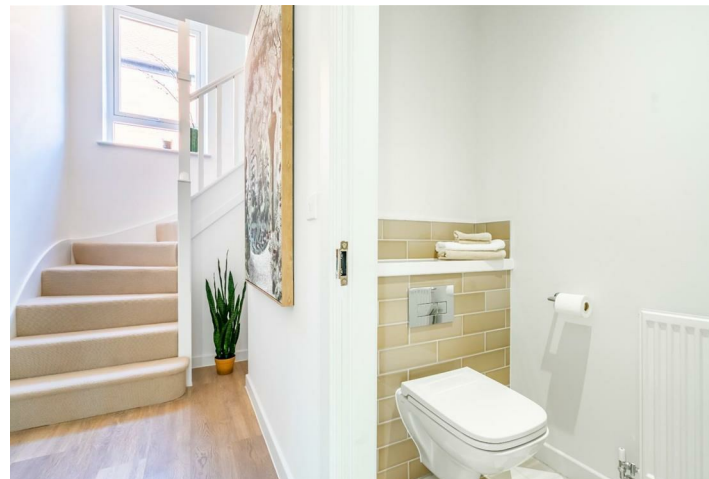
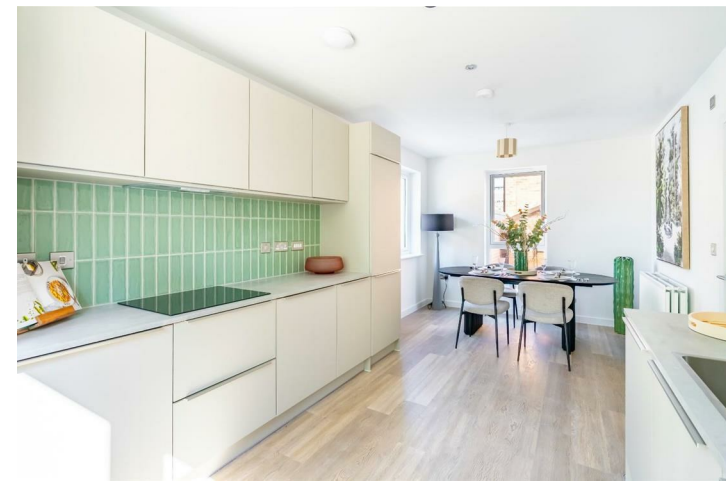
Spanning three floors, The Micklegate offers over 1,400 sq. ft. of versatile living space and four well-proportioned bedrooms, making it an ideal family home.

The ground floor features a stylish kitchen diner with Bosch appliances and Amtico flooring, and a spacious rear reception room with French doors to the private west-facing garden. A cloakroom and useful downstairs storage complete the level.

On the first floor are three generous bedrooms served by a modern family bathroom with rainfall shower. The impressive top floor is dedicated to the master suite, with en suite shower room and walk-in storage.

Externally, the property includes an enclosed garden with patio and lawn space, a shed, outdoor tap, and allocated parking, with further on-street permit parking available.

Images are for illustrative purposes only.
Estate charge: Approximately £296.61 PA





The Micklegate, Cocoa Wigginton Road, York YO31 8AS

Freehold
Council Tax Band -

- PROPERTY OF THE WEEK - £550,000
- Semi Detached House
- Four Bedrooms
- Master Suite
- Bathroom, Ensuite & W.C
- Driveway and Electric Charger Point
- No Onward Chain
- No Further Incentives Available On This Plot



TOTAL FLOOR AREA : 1460sq.ft. (135.6 sq.m.) approx.
Whilst every attempt has been made to ensure the accuracy of the floorplan, measurements of rooms and any other items are approximate. If included in the plan the garage/stores will form part of the overall floor area and no responsibility is taken for any error, omission or mis-statement. This plan is for illustrative purposes only and should be used as such by any prospective purchaser. The services, systems and appliances shown have not been tested and no guarantee as to their operability.
Made with Metropix ©2024

These particulars have been prepared as accurately and as reliably as possible, but should not be relied upon as 'statement of fact'. If there is any point which is of particular importance to you, please contact the office and we would be pleased to check the information. We have not tested any services, appliances, equipment or facilities and nothing in these particulars should be deemed to be a statement that they are in good working order, or that the property is in good structural condition or otherwise. Any areas, measurements, floor plans or distances referred to are given as a guide only and are not precise. Purchasers must satisfy themselves by inspection or by otherwise regarding the items mentioned above and as to the correctness of each of the statements contained in these particulars. No person in the employment of Ashtons has any authority to make or give any representation or warranty whatsoever in relation to this property or these particulars nor enter into any contract relating to the property on behalf of the vendor.